

Christmas



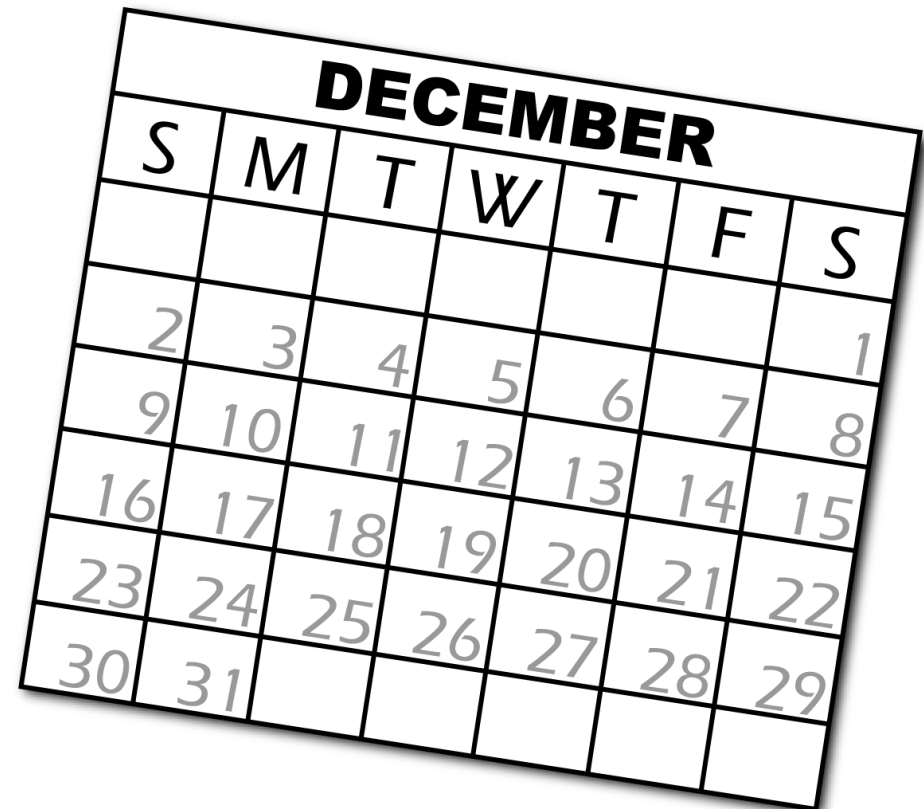
Produced by
Excellent ESL 4u
www.excellentesl4u.com



Advent

The coming of Jesus
Christ; the month leading
up to Christmas.

(noun)



DECEMBER						
S	M	T	W	T	F	S
						1
2	3	4	5	6	7	8
9	10	11	12	13	14	15
16	17	18	19	20	21	22
23	24	25	26	27	28	29
30	31					

Angel

A spiritual being who is believed to be a servant of God, usually represented as a human dressed in white with wings.

(noun)



Antler

The horn that grows on
the head of male deer.

(noun)



Bauble

A shiny small ball that is used to decorate a Christmas tree.

(noun)





Bethlehem

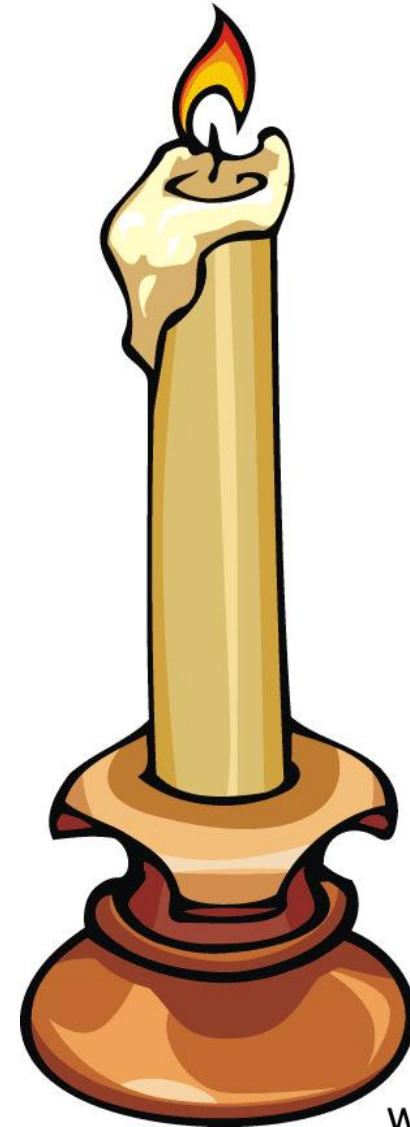
A town near Jerusalem, the birthplace of Jesus.

(noun)

Candle

A stick of wax with a string in the middle that gives light as it burns.

(noun)



Candy cane

A hard red and white candy shaped like a cane (walking stick), used to decorate a Christmas tree.

(noun)



Carol

A traditional religious song.

(noun)



Chimney

A part of the house structure that allows smoke from the fireplace to come out of the house; the place where Santa Claus comes to fill stockings with gifts for children.

(noun)



Christ

A short name for Jesus
Christ.

(noun)



Christian

A person who believes in Christianity.

(noun)

Related to Christianity.

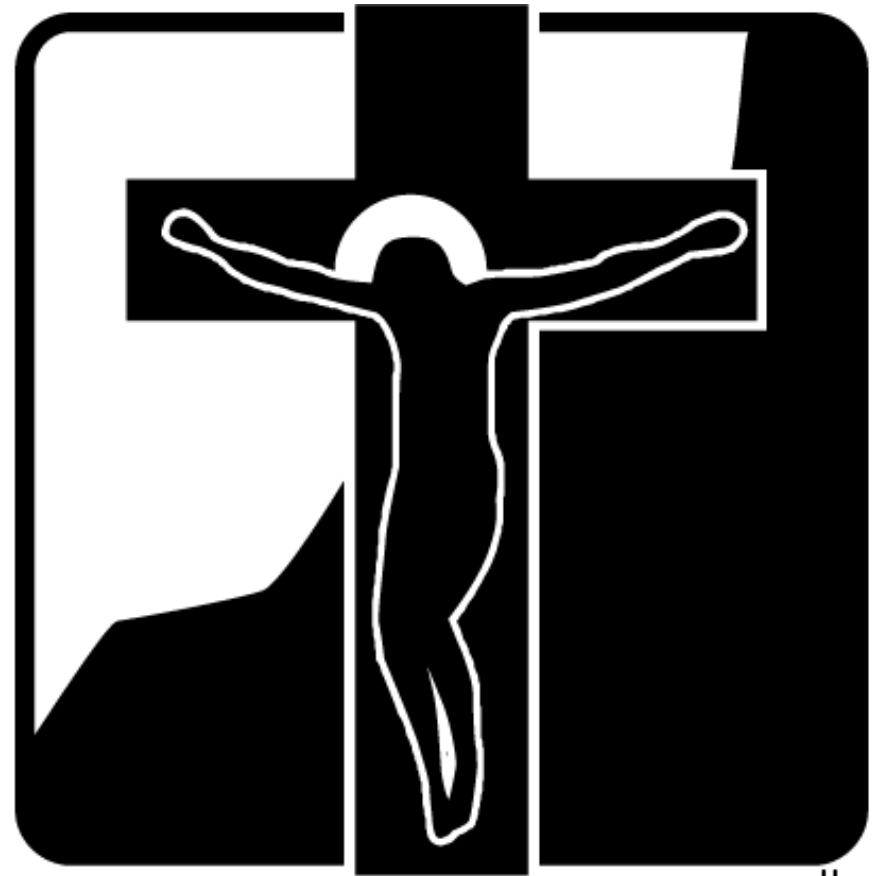
(adjective)



Christianity

The religion based on the life and teachings of Jesus Christ.

(noun)



Christmas

The period around 25 December, when Christians celebrate the birth of Jesus Christ.

(noun)



Christmas cake

A fruit cake that people eat at Christmas.

(noun)



Christmas card

A decorated card that people send to friends and relatives at Christmas.

(noun)



Christmas carol

A popular religious song that people sing at Christmas.

(noun)



Christmas Day

The day when Christians celebrate the birth of Christ, which falls on 25 December.

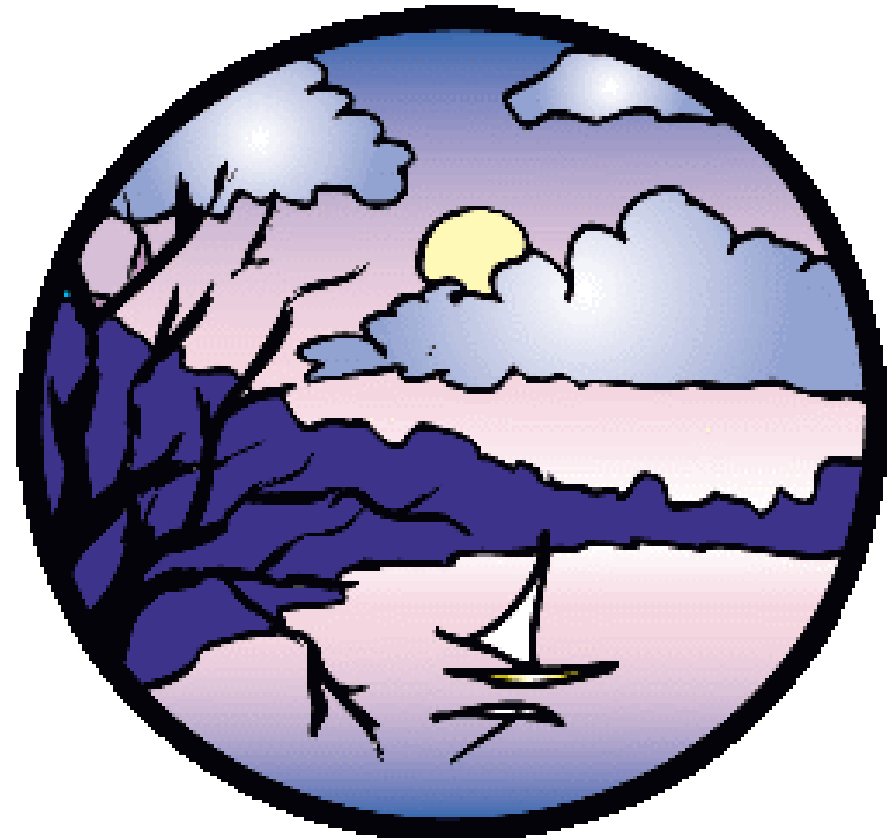
(noun)



Christmas Eve

The evening before
Christmas Day.

(noun)



Christmas holidays

Happy Holidays!

The holiday period for about a week before and after Christmas Day.

(noun)



Christmas present

A gift or present given on Christmas Day.

(noun)



Christmas stocking

A large long sock that is hung on Christmas Eve so that it can be filled with gifts.

(noun)



Christmas tree

An evergreen tree that is decorated and put in the house during Christmas.

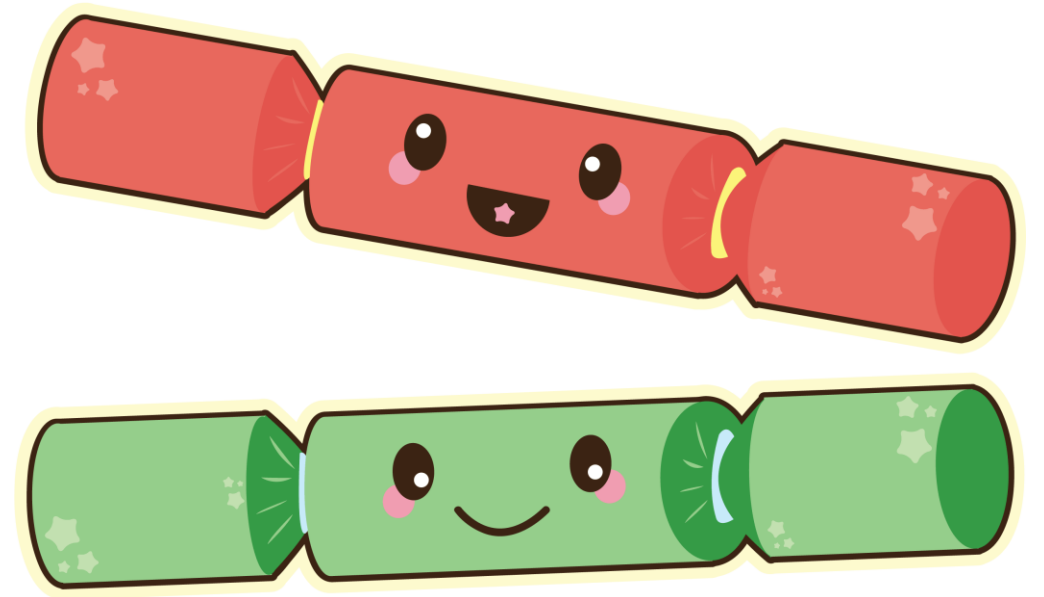
(noun)



Cracker

A paper tube that is covered with bright paper and makes a short sharp sound when both ends are pulled.

(noun)




Curling ribbon

The ribbon that has been formed into a curving shape, used as Christmas decoration.

(noun)





Egg-nog

A traditional Christmas drink made of alcohol with beaten eggs and milk.

(noun)

Elves

Small creatures with pointed ears that live with Santa Claus and act as his helpers.

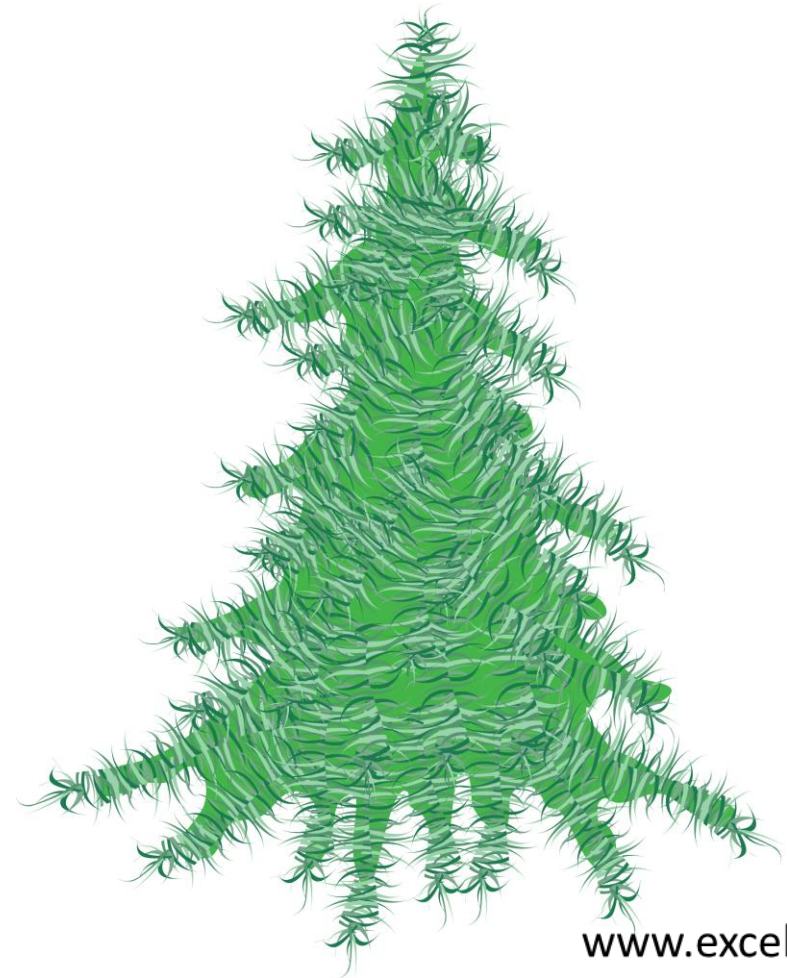
(noun)



Evergreen

A tree that does not lose
its leaves in winter.

(noun)



Father Christmas

The imaginary old man who wears red clothes and is said to bring presents to children at Christmas Eve (same as Santa Claus) (British English).

(noun)





Festive

Looking or feeling happy and enjoyable that seems suitable for celebrating something.

(adjective)

Fireplace

A space in the wall or a room, where you can make a fire.

(noun)



Garland

A circle made of flowers and leaves that is usually used as Christmas decoration.

(noun)





Gingerbread

A sweet brown cake that contains ginger.

(noun)

Gingerbread man

A piece of gingerbread in the shape of a man.

(noun)



Happy Christmas

A greeting said at Christmas to wish people a pleasant Christmas period (same as Merry Christmas).

(noun)



Holly

An evergreen plant with prickly dark green leaves and red berries.

(noun)



Illuminations

Outdoor colored decorative lights that are used to decorate a town or building to celebrate Christmas.

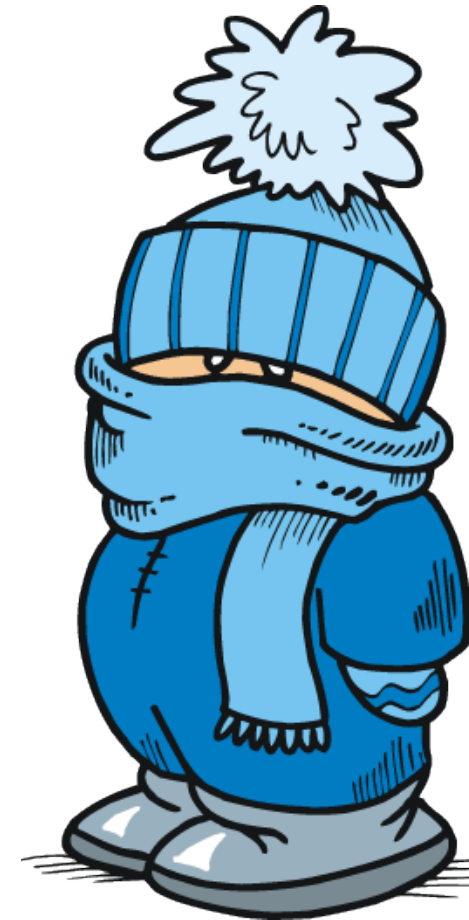
(noun)



Jack Frost

A way of describing frost,
very cold weather, as a
person.

(noun)



Jesus Christ

The man who is believed to be and is worshipped as the son of God by Christians.

(noun)





Jingle bells

The title and first words of a popular Christmas song.

(noun)



Joseph

The husband of Mary, who was Jesus' mother.

(noun)



Lapland

A region in Finland, which is believed to be the origin of Father Christmas.

(noun)

Magi

The wise men from the east who brought gifts for the baby Jesus.

(noun)



Manger

A trough for food for horses or cattle, used by Mary as a cradle or bed for Jesus.

(noun)



Mary

The mother of Jesus.

(noun)



Merry Christmas

A greeting said at Christmas to wish people a pleasant Christmas period (same as Happy Christmas).

(noun)





Midnight mass

A Christian religious service held around midnight on Christmas Eve.

(noun)

Mince pie

A pie that is filled with mincemeat (a mixture of apple, dried fruit, and nuts), often eaten at Christmas.

(noun)



Mistletoe

An evergreen plant with white fruits and pale yellow flowers, used as a Christmas decoration.

(noun)



Mitten

A type of glove with a single part for all the four fingers and a separate part for the thumb.

(noun)





Mulled wine

Wine heated with sugar and spices, a traditional winter drink in some countries.

(noun)

Nativity

The birth of Jesus.

(noun)





Nativity play

A play that tells the story about the birth of Jesus Christ, usually performed by children.

(noun)

Noel

A Christmas carol.

(noun)



Nutcracker

A popular ballet that is usually performed at Christmas.

(noun)



Ornament

An object made of glass, metal, wood, or ceramics that are used to decorate a Christmas tree.

(noun)



Pine cone

The hard, egg-shaped part of the pine tree that is often used as Christmas ornament.

(noun)



Poinsettia

A tropical plant which has large red leaves, usually used as Christmas decoration.

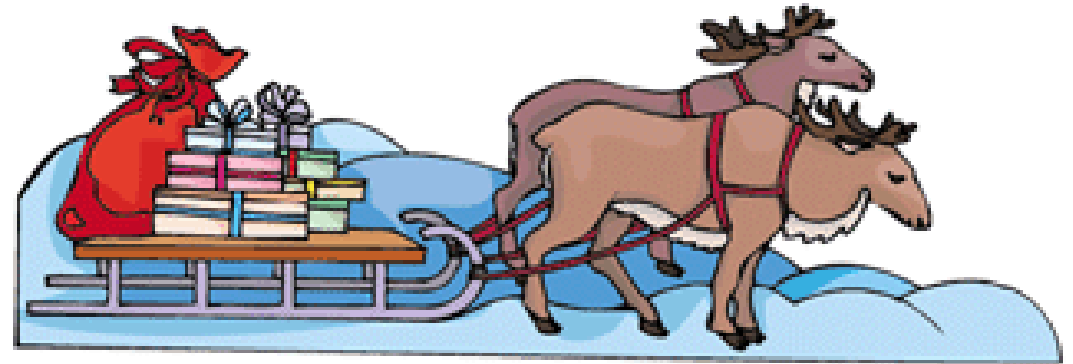
(noun)



Reindeer

A deer with large antlers found in some cold climates, which is believed to pull the sleigh for Santa Claus.

(noun)



Rejoice

To feel happy or show happiness.

(verb)





Ritual

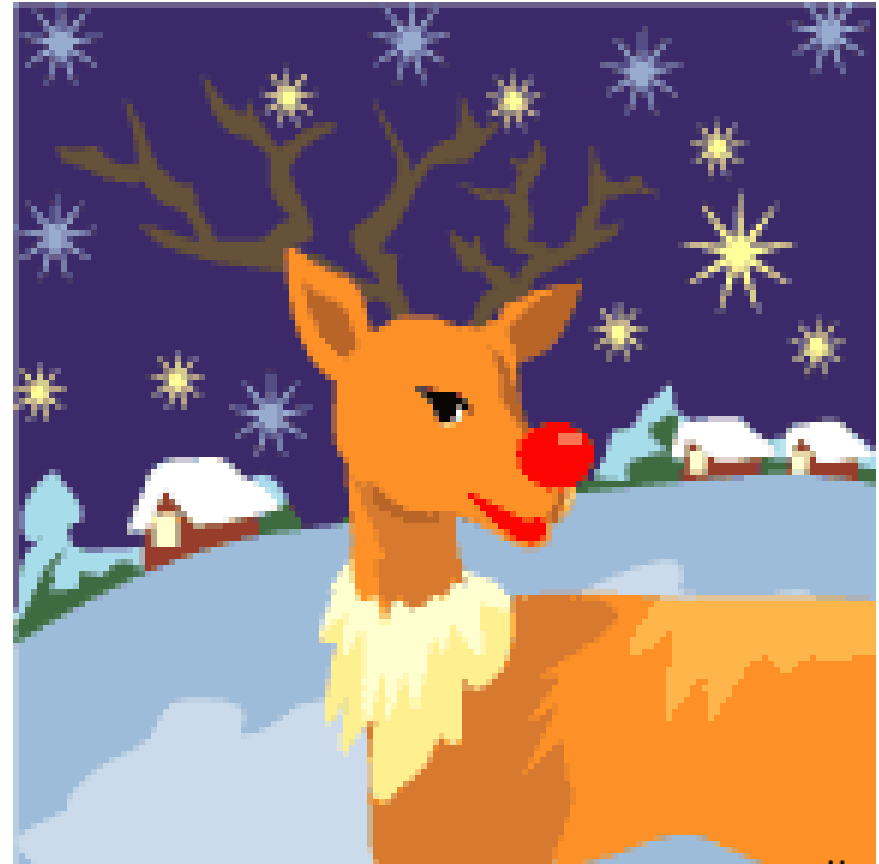
A ceremony that is performed regularly in the same way, in order to mark an important religious or social event.

(noun)

Rudolph

The red-nosed reindeer
that Santa chooses to pull
his sleigh on Christmas
Eve.

(noun)



Santa Claus

The imaginary old man who wears red clothes and is said to bring presents to children at Christmas Eve (same as Father Christmas) (American English).

(noun)



Santa's grotto

A small place where children can receive presents from a person dressed as Santa Claus.

(noun)



Season's greetings

Something written on a card as a greeting during Christmas celebrations.

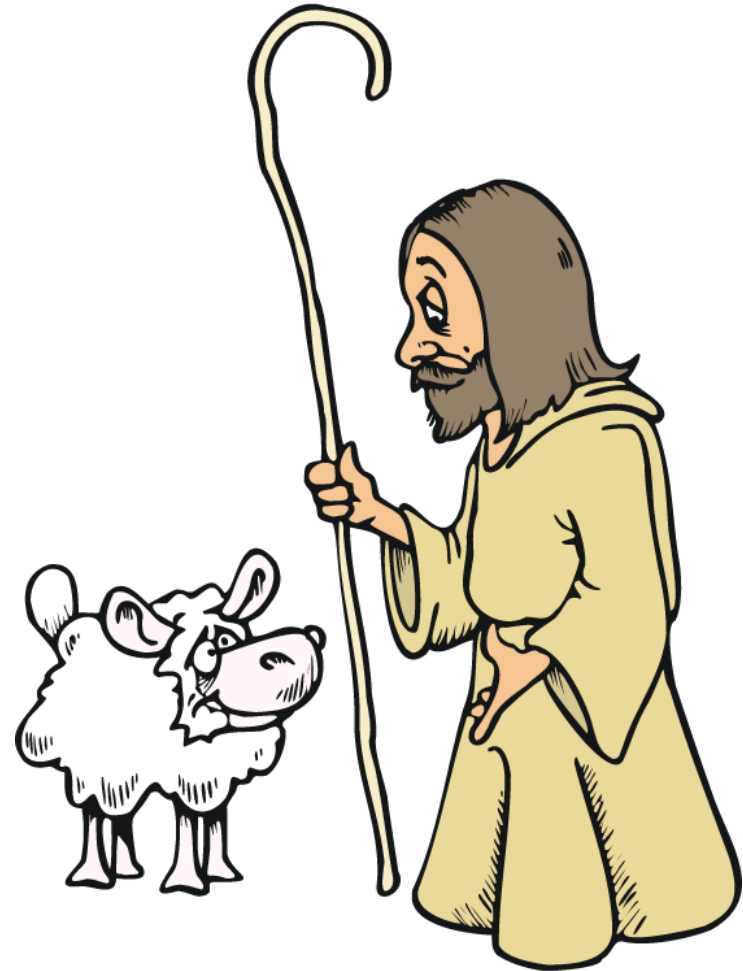
(noun)



Shepherd

A person who takes care of sheep and moves them from one place to another.

(noun)



Sleigh

An open vehicle with no wheels that is used for traveling over snow and is pulled by animals.

(noun)



Snow

The soft white pieces of ice that fall from the sky in cold weather.

(noun)



Snowflakes

A flat piece of frozen water that falls as snow, represented as six-sided crystals on Christmas cards and decorations.

(noun)



Snowman

A figure like a man that is made of snow.

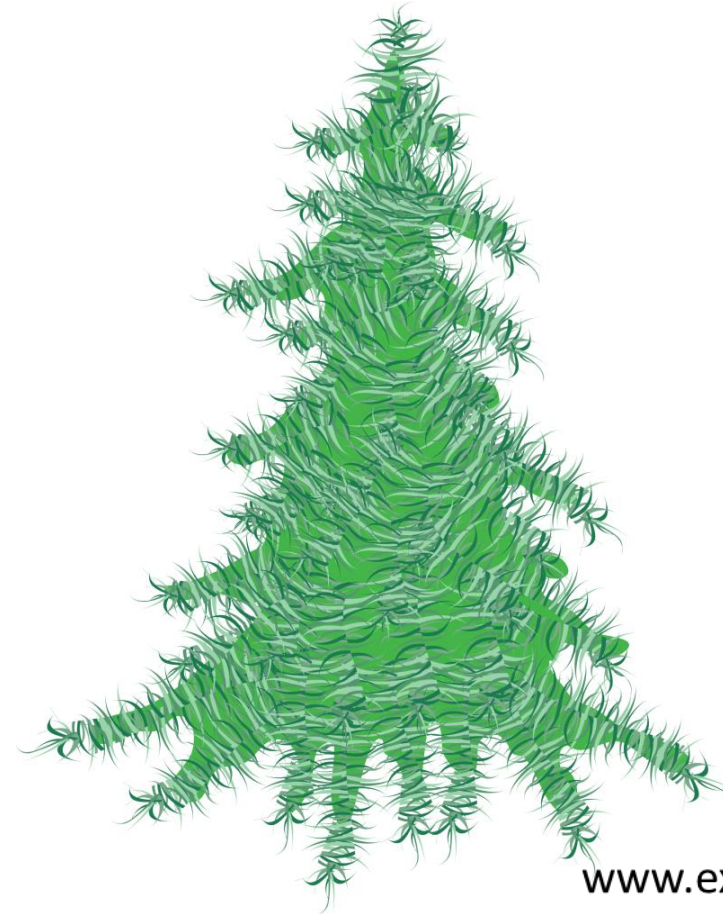
(noun)



Spruce

An evergreen forest tree with short leaves that are shaped like needles.

(noun)





Silent night

A well-known Christmas traditional religious song.

(noun)



Saint Nickolas

The origin of the imaginary Father Christmas.

(noun)

Star

A symbol with four or more points, which represents the way a star looks in the sky.

(noun)



Stocking filler

A small cheap Christmas present.

(noun)



The star of Bethlehem

The star which appeared
in the sky when Jesus
Christ was born, according
to the Bible.

(noun)



Tidings

An old word for news.

(noun)





Tinsel

Long strips of shiny paper used as Christmas decoration.

(noun)

Turkey

A large bird that is often cooked and eaten at Christmas in Britain.

(noun)





Vigil

A period of time when stay in a place and quietly pray, especially at night.

(noun)



Wassail

To enjoy yourself eating and drinking at Christmas; to go from house to house singing Christmas carols.

(verb)

White Christmas

A Christmas during which there is snow on the ground.

(noun)



Wreath

An arrangement of flowers and leaves in the shape of a circle that people usually hang on the door as Christmas decoration.

(noun)





Xmas

A short form or informal term for Christmas.

(noun)

Yule

An old word for Christmas.

(noun)





Yuletide

The period of time around Christmas.

(noun)



Yule log

A chocolate cake shaped like a log (thick piece of wood) and eaten at Christmas.

(noun)

Excellent ESL 4U

www.excellentesl4u.com



Jolyon Dodgson copyright © 2015
Image © Graphics Factory.com

